

# CHARLOTTE HARBOR ANTHROPOLOGICAL SOCIETY

September -December 2018  
[www.meetup.com/port-charlotte-archaeology-meetup](http://www.meetup.com/port-charlotte-archaeology-meetup)

## Our Mission

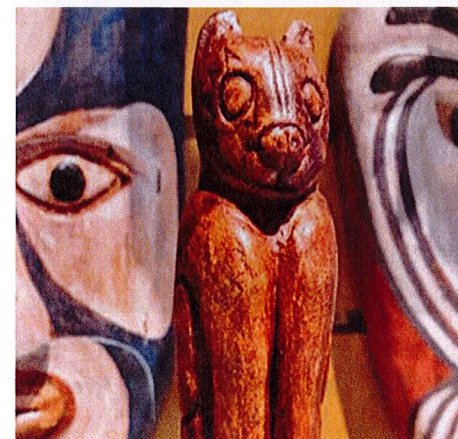
Preserve and Protect  
prehistoric sites

Educate and Inform

Foster research and  
publication

Develop private/public  
partnerships to advance  
historic tourism

Sponsor speakers and  
fieldtrips



*The Calusa Cat will be returning to Marco Island, November 18. Marco Island Historical Society Museum*

## **HISTORIAN JOHN MC CARTHY SEPT. 20TH**

**THE MANASOTA KEY OFFSHORE SITE.** The new discovery by a recreational diver is a very unique archaeological site that is located near the Manasota Key 20 feet deep in the Gulf of Mexico. Underwater archaeology from the Florida Department of State, Bureau of Archaeological Research have been working to study and protect the site. Our presenter has been a member of the stakeholder team convened by the Gulf Coast Community Foundation and will share what has been learned and let us know how we can help to protect the site. **Wintergarden Presbyterian, 18305 Wintergarden Ave. , Port Charlotte, FL 33948**

Donation at Door / Member Free **6:30 - 8 p.m.**



**JOHN MC CARTHY** is the Executive Director of the Gulf Coast Heritage Association and Historic Spanish Point in Osprey, Florida. John has worked 33 years with the Sarasota County Government, having served as Environmental Specialist, County Historian and Director of Parks and Recreation. John has served as President of the Historical Society of Sarasota County and in 2017 he was awarded the society's Hero of History Award.



# CHARLOTTE HARBOR ANTHROPOLOGICAL SOCIETY

SEPTEMBER – DECEMBER 2018

[www.meetup.com/port-charlotte-archaeology-meetup](http://www.meetup.com/port-charlotte-archaeology-meetup)

## JOIN US AT INTERNATIONAL ARCHAEOLOGY DAY

BAYSHORE PARK  
231 Bayshore Road

PORT CHARLOTTE

SPONSORED BY:

FLORIDA PUBLIC  
ARCHAEOLOGY NETWORK

and

CHARLOTTE COUNTY



Mound Key. Now a State Park in Estero Bay, was the capital of the Calusa. SEE [WWW.HERITAGE-MATTERS.ORG](http://WWW.HERITAGE-MATTERS.ORG)

## ARCHAEOLOGIST THERESA SHOBER OCT 18TH

**BRINGING THE CALUSA STORY TO LIFE.** Remnants of elevated mounds and ridges, sculpted canals and water courts remain visible yet subtle reminders of the once thriving Calusa chiefdom that controlled the southern third of the Florida peninsula by the 18<sup>th</sup> century Spanish contact. Mound Key -the Calusa capital village, remains the first specific location documented in the voyage of Juan Ponce DeLeon in 1513 that named *La Florida*. Theresa has produced this story for an exciting and informative documentary film to air on PBS this coming season.

**6:30 - 8 p.m.**

Donation at Door / Members  
Free

THERESA SHOBER is executive producer of the forthcoming documentary film *Escampaba*, about the Spanish encounter with the Calusa. The film will air on PBS. She is graduate with a master's in anthropology from the University of Illinois Urbana-Champaign. Currently, Theresa is in the doctoral program at the University of Florida

BE A SPONSOR

heritage-  
[matters.org/sponsors/](http://matters.org/sponsors/)



WINTERGARDEN PRESBYTERIAN CHURCH, 18305 Wintergarden Ave.

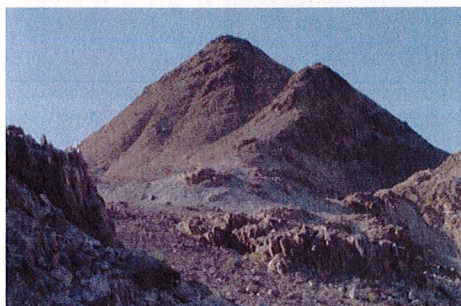


# CHARLOTTE HARBOR ARCHAEOLOGICAL SOCIETY

## QUOTE:

**"In my view, the real power behind first mound building came out of the group mind. The power of which I speak undergirded practice and custom. It not only touched the core of Archaic society, it was the core."**

John L. Gibson

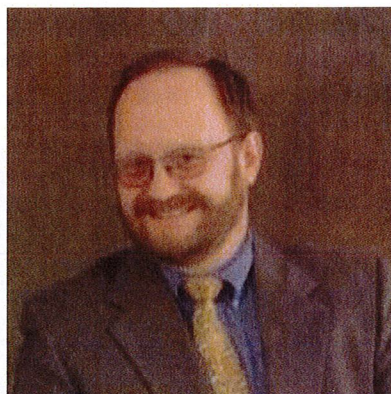


*The Afar of Ethiopia.*

## MEMBER SERIES; GENE DOLE, NOV 15TH

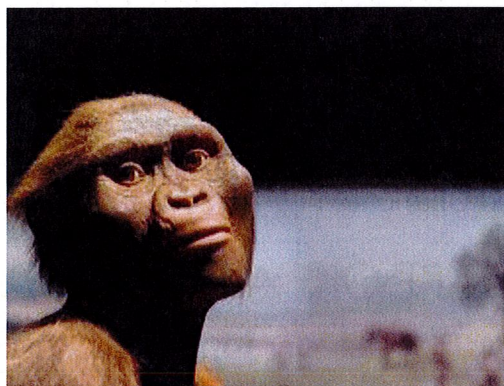
### 'THE AFAR OF ETHIOPIA FINDING "LUCY"'

Gene will talk about his participation in the 1973 and 1974 International Afar Research Expedition. They were the first truly fully cooperative international team of paleo-anthropologists, paleologists, and paleontologists. They explored the Afar, the desert lowlands of Ethiopia. The first field season revolutionized the understanding of what allowed early hominins to survive and set them on their way toward becoming Homo sapiens. The second season rocked the field by first finding cranial material from multiple individuals found 1,000 yards from their campsite. A couple of days later, they found "Lucy", the most complete skeleton for 99% of human evolution. Join Gene for the 44<sup>th</sup> anniversary of Lucy's discovery Nov. 24<sup>th</sup>, 1974 the fossilized remains of a 3.5 million-year old ancestor.



**GENE DOLE**, lives in Englewood, after a successful career in healthcare management. He graduated with a BA in anthropology from Case Western Reserve University in 1974. He went on to earn his master's in marketing and finance from Cleveland State University

[www.meetup.com/port-charlotte-archaeology-meetup](http://www.meetup.com/port-charlotte-archaeology-meetup)





**QUOTE:**

**“There is a third much more ancient Florida. This is a place that is often forgotten, downplayed or actively denied in recent grand narratives.”**

**Neil J. Wallis & Asa Randall**



*Fisheating Creek, Glade County, Florida where the first Great Circle was built in 800 B.C.. Eight more were built.*

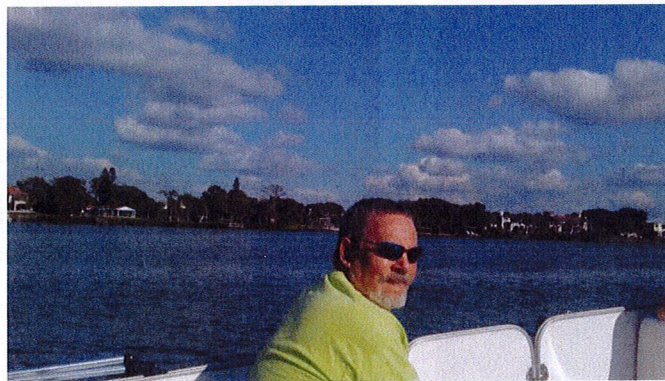
**BECOME A MEMBER:** STUDENT 10.00, ADULT 25.00, FAMILY 40.00, PATRON 100.00, BENEFACTOR 250.

**MEMBERS SERIES: HISTORIAN, TED EHMAN DEC. 20TH**

**THE PEOPLE OF THE GREAT CIRCLE, *The Prehistoric Mound Builders of South Florida***

Ehmann began researching the prehistoric peoples of south Florida soon after retiring to Port Charlotte in 2016. While living in New Jersey, he began a 25-year-long investigation of the mound builders of the Ohio and Mississippi Valleys. He had no idea of the mound builders in south Florida. His research explains why so many are unaware of the mound builders here. He has developed a very unique view of what he refers to as one of the most important epochs in world prehistory. While the Calusa and their neighbors shared many similarities with other cultures, Ehmann found that their characteristics and achievements were unmatched. Ehmann attributes their twenty-five-century-long existence and their monumental earthwork complexes to powerful beliefs. Artist, anthropologist and historian, Ehmann is the first to interpret the symbols employed by the Calusa that reveal their unique beliefs, social organization and even their origin

**6:30 - 8p.m.** Donation at Door / Members Free



**TED EHMAN**, has been a fine artist his entire adult life. The grandson of noted painter M. Frank Ehmann, he attended the Philadelphia College of Art. In the 1970's and 80's, Ehmann has his own advertising firm. His most notable client was the world-famous inventor Buckminster Fuller. He received his master's in teaching from The College of New Jersey. He has taught fine art, the histories and humanities from college to elementary.

**ALL PRESENTATIONS WILL BE HOSTED BY THE WINTERGARDEN PRESBYTERIAN CHURCH**

18305 Wintergarden Ave., Port Charlotte, FL, Devon Beisser Andrews, Pastor

**CHARLOTTE HARBOR ANTHROPOLOGICAL SOCIETY**

P.O. Box 380147, Port Charlotte, FL 33948

[www.meetup.com/port-charlotte-archaeology-meetup](http://www.meetup.com/port-charlotte-archaeology-meetup)

[www.meetup.com/port-charlotte-archaeology-meetup](http://www.meetup.com/port-charlotte-archaeology-meetup)

[idigcharlotte@gmail.com](mailto:idigcharlotte@gmail.com)